

CCT490: Week 8

Producing Open Source Software

Yuri Takhteyev

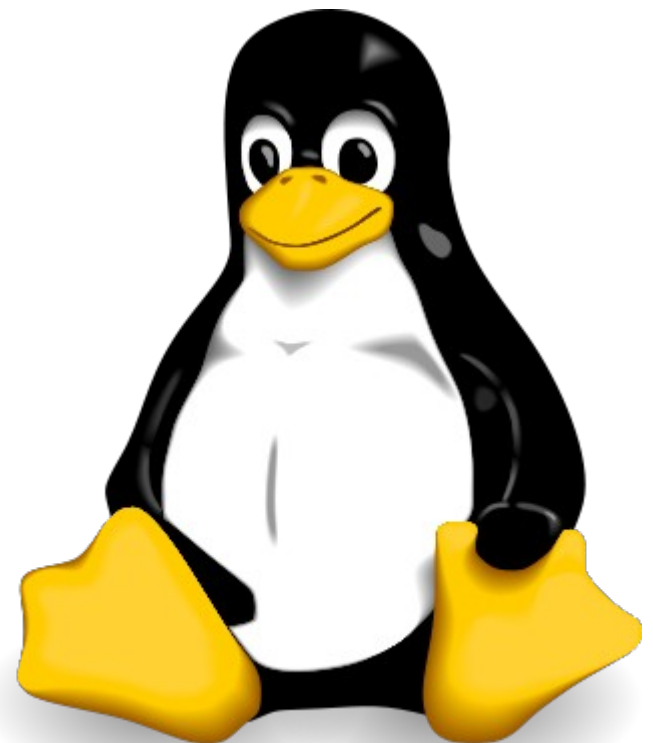
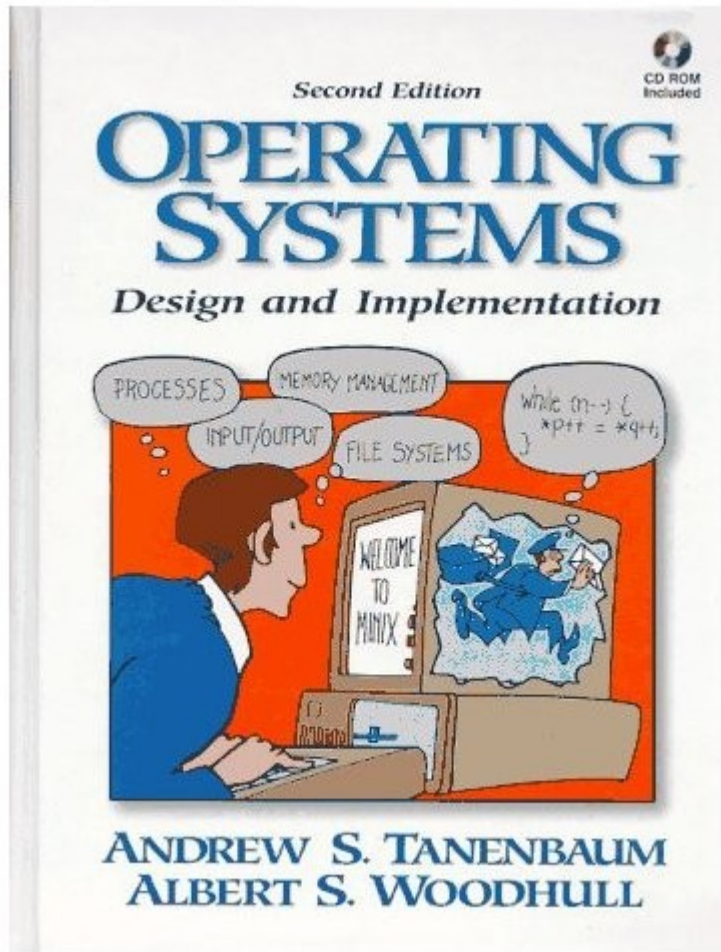
University of Toronto

October 27, 2010



This presentation is licensed under Creative Commons Attribution License, v. 3.0. To view a copy of this license, visit <http://creativecommons.org/licenses/by/3.0/>. This presentation incorporates images that belong to other authors – see individual images' sources for copyright information.







redhat.®

Company Name	Number of Changes	Percent of Total
None	13,850	21.1%
Red Hat	7,897	12.0%
IBM	4,150	6.3%
Novell	4,021	6.1%
Intel	3,923	6.0%
Unknown	2,765	4.2%
Oracle	2,003	3.1%
Consultant	1,480	2.3%
Parallels	1,142	1.7%
Fujitsu	1,007	1.5%
Academia	992	1.5%
Analog Devices	889	1.4%
Renesas Technology	884	1.3%
SGI	755	1.2%
Movial	738	1.1%
Sun	639	1.0%
HP	628	1.0%
Freescale	613	0.9%
Marvell	601	0.9%
MontaVista	574	0.9%
AMD	552	0.8%
Nokia	549	0.8%
Vyatta	513	0.8%
Google	512	0.8%
Atheros Communications	494	0.8%



image source: <http://www.flickr.com/photos/kino-eye/39036635/sizes/m/in/photostream/>



אנדרואיד

Three Questions

Why do people contribute?

Why do people *use* free software?

How does anything get done?

Brooks' Law

"Adding manpower
to a late software project
makes it later."

Brooks (1975) *The Mythical Man-Month*.

Some Solutions

- Modularity
- Continuous integration
- Test-driven development
- Task allocation

Fogel (2005)

Technical infrastructure

Website

Mailing list

Version control

Bug tracking

“Social infrastructure”

Forkability

Benevolent dictators

Consensus

Voting

mozilla

Products

Add-ons

Support

Community

About



Firefox® 3.6

Meet the world's best browser,
made just the way you like it. [Learn more.](#)



Download Firefox - Free

3.6.11 for Linux i686
English (US) (9.4MB)

[All Systems & Languages](#) | [Privacy Policy](#)

What's Happening at Mozilla?

[The Firefox 4 Beta is Here!](#)

Help make the next version of the world's best browser.

[Stay Connected with Mozilla](#)

Get our monthly newsletter for the latest news, special events and more.

Firefox for Mobile



The best Web browser has
gone mobile!

Thunderbird



Enjoy safe, fast, and easy
email. [Mozilla-style.](#)

[Main](#)
[Features](#)
[Manual](#)
[FAQ](#)
[FAQ \(PDF\)](#)
[Design Notes](#)
[Download](#)
[Security/Errata](#)
[Development](#)
[Project Page](#)

Fetchmail



NEWS: FETCHMAIL 6.3.18 RELEASE

On 2010-10-16, [an erratum notice was issued](#) to document important fixes made in the 6.3.18 release listed below. Distributors are advised to upgrade their packages to 6.3.18.

On 2010-10-09, [fetchmail-6.3.18 has been released \(this is the download link\)](#), fixing a regression of the rcfile parser from 6.3.0, a security bug in debug output that can cause memory exhaustion and abort, and improves SSL usability. It is a recommended update for all users and distributors. [Click here to see the change details](#).

UTF7 in mailbox names (developer document)

There is a [new document about mailbox name encoding in IMAP](#), an invited contribution by Mark Crispin. It applies to all IMAP clients and servers and is not limited to fetchmail, and arose after a discussion on the getmail mailing list. Note that as of 2010-05-25, neither fetchmail nor getmail currently supports this directly; for the nonce, you need to manually encode the mailbox name in UTF-7 for both applications.

SSL issues after upgrade to OpenSSL 1.0.0?

If your fetchmail upgrade entails an upgrade of the OpenSSL library to 1.0.0, remember to re-run `c_rehash /path/to/certs`, where the last part is whatever argument you give to fetchmail's `sslcertpath` option. Details: please [see fetchmail's FAQ item R14](#)..

SECURITY ALERTS

These have been moved to a [separate page \(click here for security information\)](#) to unclutter the front page.

Please update to the newest fetchmail version.

What fetchmail does:



- Project Home
- Downloads
- Wiki
- Issues
- Source

Summary | [Updates](#) | [People](#)

Python Twitter

A python wrapper around the Twitter API

Author: The Python-Twitter Developers <python-twitter@googlegroups.com>

Introduction

This library provides a pure python interface for the Twitter API.

Twitter (<http://twitter.com>) provides a service that allows people to connect via the web, IM, and SMS. Twitter exposes a web services API (<http://twitter.com/help/api>) and this library is intended to make it even easier for python programmers to use.

Building

From source:

Install the dependencies:

- <http://cheeseshop.python.org/pypi/simplejson>
- <http://github.com/simplegeo/python-oauth2>
- <http://code.google.com/p/httplib2/>

Download the latest python-twitter library from:

<http://code.google.com/p/python-twitter/>

Untar the source distribution and run:

```
$ python setup.py build  
$ python setup.py install
```

Testing

Activity: [High](#)

Code license:
[Apache License 2.0](#)

Labels:
[python](#), [twitter](#), [api](#)

Featured downloads:

[python-twitter-0.6.tar.gz](#)
[Show all »](#)

Feeds:
[Project feeds](#)

Groups:
[Python twitter group](#)
[Twitter development group](#)

Owners:
[dclinton](#), [bear42](#)

Committers:
[mihai.parparita](#), [marcmagus](#),
[hameed.u.khan](#), [cydeweys](#),
[duda...@gmail.com](#), [jdwcomell](#), [jhebert](#),
[dew...@google.com](#)

[People details »](#)

LKML.ORG

[\[lkml\]](#) [\[2010\]](#) [\[Oct\]](#) [\[26\]](#) [\[last100\]](#) **RSS**

Views: [\[more markup\]](#) [\[less markup\]](#) [\[headers\]](#) [\[forward\]](#)

October 2010

27 28 29 30 1 2 3

4 5 6 7 8 9 10

11 12 13 14 15 16 17

18 19 20 21 22 23 24

25 26 27 28 29 30 31

Messages in this thread

- *First message in thread*
- **Linus Torvalds**
- *Steven Rostedt*
- *Ingo Molnar*

Web lkml.org

From Linus Torvalds <>

Date Tue, 26 Oct 2010 08:06:40 -0700

Subject Re: [tip:perf/urgent] tracing: Prevent unloadable modules from using trace_bprintk()

On Tue, Oct 26, 2010 at 3:21 AM, tip-bot for Steven Rostedt

<stostedt@redhat.com> wrote:

>

> tracing: Prevent unloadable modules from using trace_bprintk()

I still don't think this patch makes sense.

Some of it is just totally insane. The CONFIG_MODVERSIONS check is just crazy. MODVERSIONS has nothing what-so-ever to do with the issue.

Don't do this. It's total voodoo programming.

Linus

Last update: 2010-10-26 17:11 [W:0.065 / U:0.160 seconds]

©2003-2010 Jasper Spaans

[Home](#)[Community \(wiki\)](#)[Security](#)[Help](#)[Documentation](#)[Download](#)[Mailing Lists](#)[Developers](#)

Overview

Home

[Security](#)[Features](#)[Donate!](#) *(exit)*

More Information

[Wiki](#) *(exit)*[Discussion Lists](#)[Launchpad Project Page](#)[Rants, Papers, and Logos](#)[Bugs and Patches](#)[Mirrors](#)

Related Links *(exits)*

[Python](#)[GNU](#)[Barry Warsaw](#)

Email Us

mailman-cabal@python.org

Mailman, the GNU Mailing List Manager

Mailman is free software for managing electronic mail discussion and e-newsletter lists. Mailman is integrated with the web, making it easy for users to manage their accounts and for list owners to administer their lists. Mailman supports built-in archiving, automatic bounce processing, content filtering, digest delivery, spam filters, and more. See the [features page](#) for details.

Mailman is free software, distributed under the [GNU General Public License](#). Mailman is written in the [Python](#) programming language, with a little bit of C code for security.

Please [donate to GNU Mailman project](#). ([details](#))

See the [Security page](#) for important security related information, including critical patches and contact information for reporting suspected security vulnerabilities. Also see the [Mailman Wiki](#) for the latest information about stable and development versions.

Current Version

The current stable GNU Mailman version is 2.1.14, released on 20-Sep-2010.

Acknowledgements

Mailman's lead developer is [Barry Warsaw](#) who can be contacted barry at list dot org. Mark Sapiro and Tokio Kikuchi are also core Mailman developers.

Barry, Mark, and Terri Oda form the Mailman Steering Committee.

Thanks go out to:

Version Control (or “revision control”)

subversion, git,
mercurial, bazaar

Recording changes
Undoing
Comparing
Blaming
Sharing

Getting Mozilla Source Code Using Mercurial

[Mercurial](#) is a source-code management tool which allows users to keep track of changes to the source code locally and share their changes with others. It is used for the development of Firefox 3.5/Mozilla 1.9.1 and later releases.

Note: If you want to contribute patches to Thunderbird 3.x or SeaMonkey 2.x development, use [Comm-central source code](#). If you want to contribute patches to Firefox 3.0.x, Thunderbird 2.0.x or SeaMonkey 1.1.x development, use [CVS source code](#).

Client settings

Installing and configuring Mercurial

See [Installing Mercurial](#).

Checking out a source tree

There are multiple hg repositories hosted at mozilla.org, see <http://hg.mozilla.org/> for the full list.

mozilla-central (main development tree)

Code for future releases lives in [mozilla-central](#).

Page Notifications **Off**

Table of contents

Client settings

[Installing and configuring Mercurial](#)

Checking out a source tree

[mozilla-central \(main development tree\)](#)

[mozilla-central \(latest successful build\)](#)

[mozilla-1.9.2 \(Firefox 3.6\)](#)

[mozilla-1.9.1 \(Firefox 3.5\)](#)

[comm-central \(Thunderbird/SeaMonkey/Calendar\)](#)

Bundles

[Building](#)

[See also](#)

[Tags](#)

[Files](#)

The Linux Kernel Archives

Welcome to the Linux Kernel Archives. This is the primary site for the Linux kernel source, but it has much more than just Linux kernels.
[Frequently Asked Questions](#)

Protocol	Location
HTTP	http://www.kernel.org/pub/
FTP	ftp://ftp.kernel.org/pub/
RSYNC	rsync://rsync.kernel.org/pub/

Latest Stable Kernel:

[2.6.36](#)

linux-next:	next-20101026	2010-10-26	[Patch]	[View Patch]	[Gitweb]			
snapshot:	2.6.36-git9	2010-10-27	[Patch]	[View Patch]				
mainline:	2.6.36	2010-10-20	[Full Source]	[Patch]	[View Patch]	[Gitweb]	[Changelog]	
stable:	2.6.36	2010-10-20	[Full Source]	[Patch]	[View Patch]	[Gitweb]	[Changelog]	
stable:	2.6.35.7	2010-09-29	[Full Source]	[Patch]	[View Patch]	[View Inc.]	[Gitweb]	[Changelog]
stable:	2.6.34.7	2010-09-13	[Full Source]	[Patch]	[View Patch]	[View Inc.]	[Gitweb]	[Changelog]
stable:	2.6.33.7	2010-08-02	[Full Source]	[Patch]	[View Patch]	[View Inc.]	[Gitweb]	[Changelog]
stable:	2.6.32.24	2010-10-01	[Full Source]	[Patch]	[View Patch]	[View Inc.]	[Gitweb]	[Changelog]
stable:	2.6.31.14	2010-07-05	[Full Source]	[Patch]	[View Patch]	[View Inc.]	[Gitweb]	[Changelog]
stable:	2.6.27.54	2010-09-20	[Full Source]	[Patch]	[View Patch]	[View Inc.]	[Gitweb]	[Changelog]
stable:	2.4.37.10	2010-09-06	[Full Source]	[Patch]	[View Patch]	[Gitweb]	[Changelog]	

Changelogs are provided by the kernel authors directly. Please don't write the webmaster about them.
[Customize the patch viewer](#)



/pub/scm / linux/kernel/git/next/linux-next.git / summary



summary | [shortlog](#) | [log](#) | [commit](#) | [commitdiff](#) | [tree](#)

commit search: re

description The linux-next integration testing tree
owner Stephen Rothwell
last change Tue, 26 Oct 2010 02:50:54 +0000
URL <git://git.kernel.org/pub/scm/linux/kernel/git/next/linux-next.git>
<http://git.kernel.org/pub/scm/linux/kernel/git/next/linux-next.git>
<https://git.kernel.org/pub/scm/linux/kernel/git/next/linux-next.git>

shortlog

22 hours ago Stephen Rothwell **Add linux-next specific files for 20101026** [master](#) [next-20101026](#) [commit](#) | [commitdiff](#) | [tree](#) | [snapshot](#)

22 hours ago Stephen Rothwell **Merge remote branch 'cleancache/linux-next'** [commit](#) | [commitdiff](#) | [tree](#) | [snapshot](#)

22 hours ago Stephen Rothwell **Merge remote branch 'staging-next/staging-next'** [commit](#) | [commitdiff](#) | [tree](#) | [snapshot](#)

22 hours ago Stephen Rothwell **Merge branch 'quilt/usb'** [commit](#) | [commitdiff](#) | [tree](#) | [snapshot](#)

22 hours ago Stephen Rothwell **Merge branch 'quilt/tty'** [commit](#) | [commitdiff](#) | [tree](#) | [snapshot](#)

22 hours ago Stephen Rothwell **Merge branch 'quilt/driver-core'** [commit](#) | [commitdiff](#) | [tree](#) | [snapshot](#)

23 hours ago Stephen Rothwell **Merge remote branch 'hwpoison/hwpoison'** [commit](#) | [commitdiff](#) | [tree](#) | [snapshot](#)

23 hours ago Stephen Rothwell **Merge remote branch 'sfi/sfi-test'** [commit](#) | [commitdiff](#) | [tree](#) | [snapshot](#)

23 hours ago Stephen Rothwell **Merge remote branch 'edac-amd/for-next'** [commit](#) | [commitdiff](#) | [tree](#) | [snapshot](#)

23 hours ago Stephen Rothwell **Merge remote branch 'xen-pvhvm/linux-next'** [commit](#) | [commitdiff](#) | [tree](#) | [snapshot](#)

23 hours ago Stephen Rothwell **Merge remote branch 'swiotlb-xen/master'** [commit](#) | [commitdiff](#) | [tree](#) | [snapshot](#)

24 hours ago Stephen Rothwell **Merge remote branch 'xen/upstream/xen'** [commit](#) | [commitdiff](#) | [tree](#) | [snapshot](#)

24 hours ago Stephen Rothwell **Merge remote branch 'oprofile/for-next'** [commit](#) | [commitdiff](#) | [tree](#) | [snapshot](#)

24 hours ago Stephen Rothwell **Merge remote branch 'tip/auto-latest'** [commit](#) | [commitdiff](#) | [tree](#) | [snapshot](#)

24 hours ago Stephen Rothwell **Merge remote branch 'omap_dss2/for-next'** [commit](#) | [commitdiff](#) | [tree](#) | [snapshot](#)

24 hours ago Stephen Rothwell **Merge remote branch 'spi/next-spi'** [commit](#) | [commitdiff](#) | [tree](#) | [snapshot](#)

...

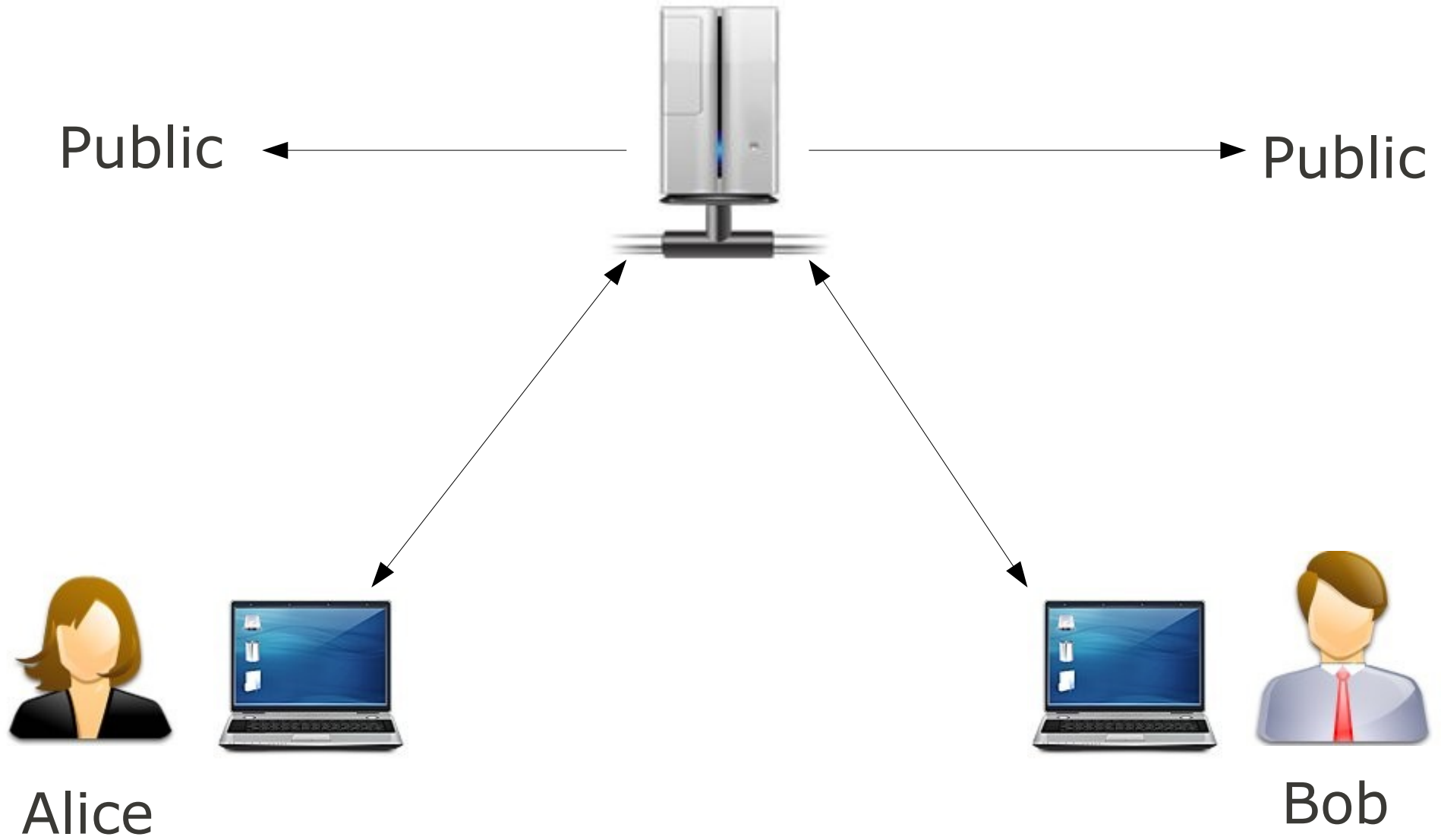
tags

22 hours ago **next-20101026** next-20101026 [tag](#) | [commit](#) | [shortlog](#) | [log](#)

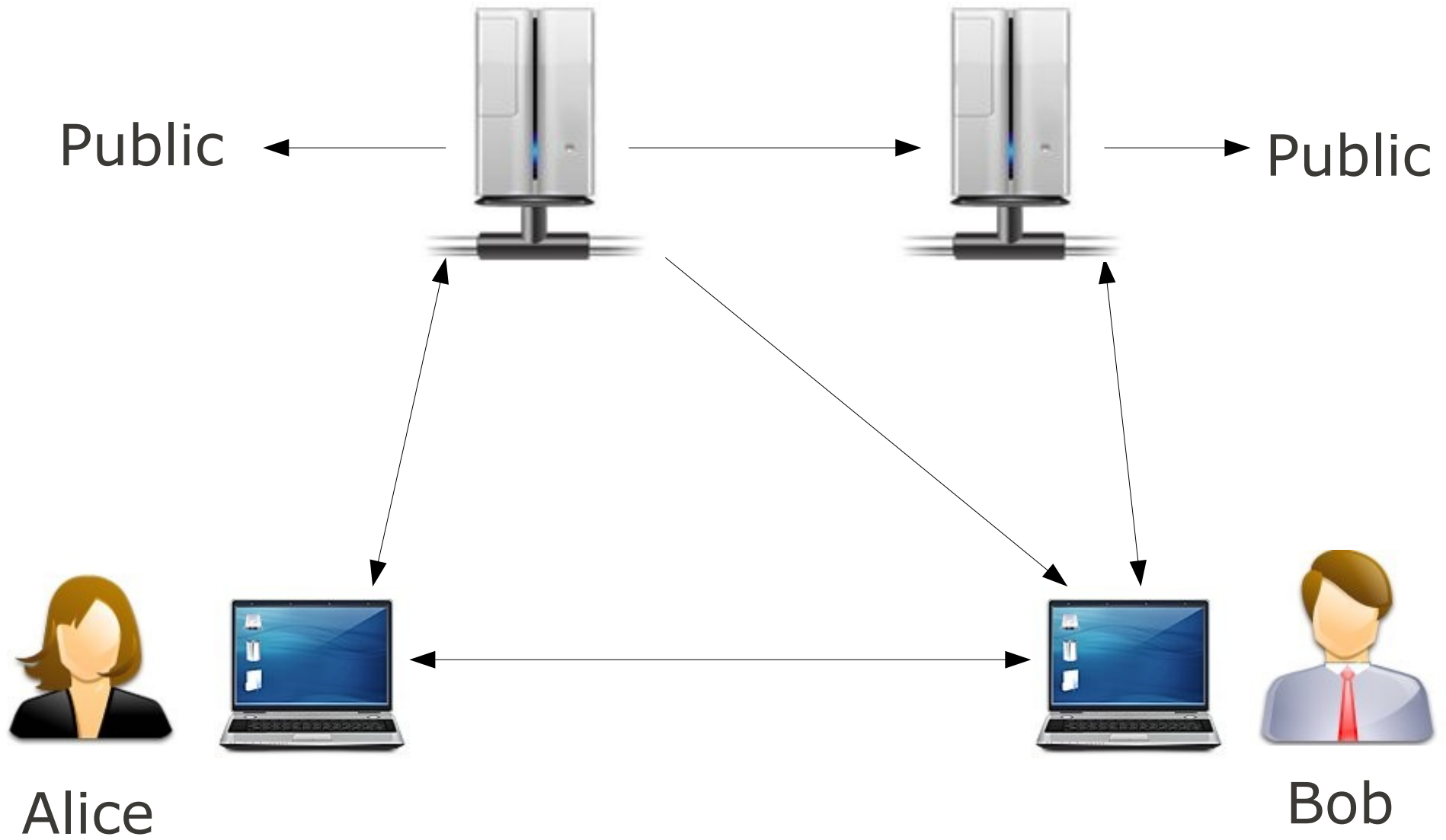
45 hours ago **next-20101025** next-20101025 [tag](#) | [commit](#) | [shortlog](#) | [log](#)

```
git clone git://git.kernel.org/pub/scm/linux/kernel/git/next/linux-next.git
```

centralized (e.g. subversion)



distributed (e.g. git)



Bug Tracking

Welcome to Mozilla's Bugzilla



Get Help



File a Bug



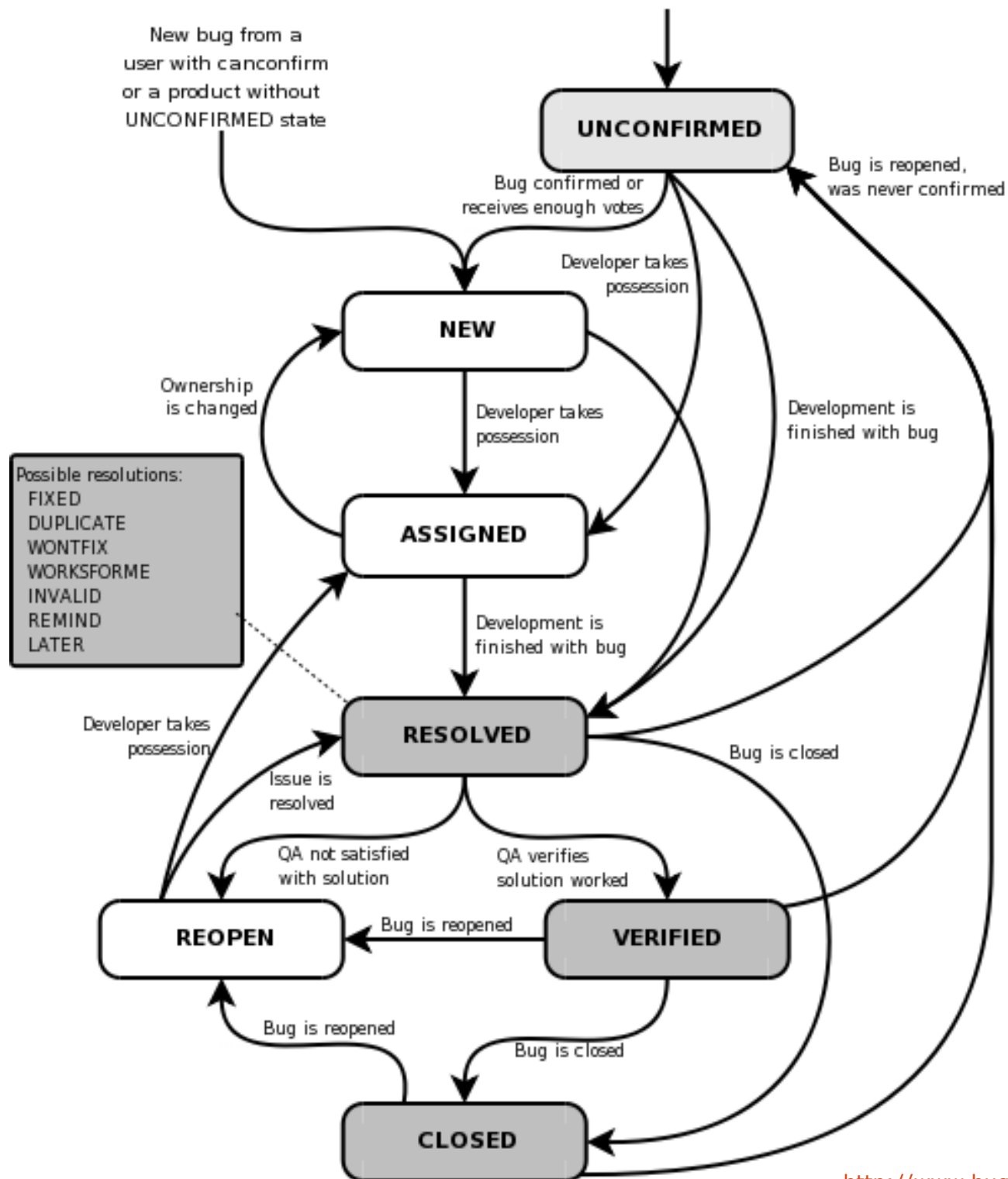
Search



Open a New Account

[Quick Search help](#)

[Bugzilla Etiquette](#) | [Bug Writing Guidelines](#) | [Release Notes](#)



“Social Infrastructure”

“Benevolent Dictator”



oligarchy

“Forkability”

“Democracy”